



Gaasbeeksesteenweg 140 1500 HALLE Tel : (32) 2 361 21 21 Fax : (32) 2 360 27 70

Web Site : www.hsb.be Email: ops@hsb.be

LICENTIE LUCHTARBEID 472 - AIR OPERATOR CERTIFICATE B-OPS3 - 3007

FRANCORCHAMPS 2011

2011/08/26.27.28

HELI SERVICE BELGIUM HELIPORT

PROCEDURES & INFORMATION

1. INTRODUCTION

- 1.1 The TRA is implemented by NOTAM around the Francorchamps circuit. All the other airspace is an airspace Class G where only FLIGHT INFORMATION SERVICE is provided based upon the known traffic.
- 1.2 Personnel providing AFIS at the heliports is not to be considered as representatives of an official ATC or FIS provider. They are Air Traffic Controllers acting as private persons trying to give the best help as possible to helicopter pilots in a busy environment.
- 1.3 Any advice or information issued by the heliports is only a tool to help pilots and must not be considered as an officially received clearance.
- 1.4 The purpose of the published procedure is only to enhance safety in a busy environment.
- 1.5 Following the information or advice issued by the heliports AFIS does not relieve the pilot in command of his responsibility to maintain his own separation from known or unknown traffic.
- 1.6 The commander has full responsibility for terrain clearance, separation with other aircraft and separation for taxiing and parking. In any case the responsibility of the operator of the heliport, its representative, his personnel on the ground or the AFIS can be involved.
- 1.7 All flights shall be conducted clear of clouds and with sight of the surface of the ground
The pilot of an aircraft shall provide and maintain his/her own separation visually from all other aircraft
- 1.8 The good will and the responsibility of the pilot in command to take in consideration the published and oral advisory procedures will guarantee a safe operation, as a dense traffic is foreseen at certain hours.
- 1.9 Whilst thanking in advance all private owners, A.O.C. operators and their pilots for their kind cooperation in this matter, Heli Service Belgium, his ground crew and the AFIS representatives are taking this opportunity to wish all aircrews a safe flight.
- 1.10 There will be periods during the Grand prix shuttle when radio usage is intense and may approach saturation. Please be short when using the radio :
Call Francorchamps info at 5 minutes of the helipad : PPR Nr, position, for Francorchamps heliport
First call : PPR, five minutes out for full stop/shuttle flight
Answer : west procedure, QNH ... report downwind
Second call : PPR Nr, final
When departure from heliport, call 130.4 : PPR Nr , taxi to the helispot

2. GENERAL ARRANGEMENTS

- 2.1 The hereunder-described prescriptions will be closely followed and will be considered as accepted as soon as the helicopter will arrive in the vicinity of FRANCORCHAMPS helipad
- 2.2 The documents and Maps in this form recommend the inbound and outbound procedures for Heli Service Belgium Heliport. For the Roannay heliport, situated in the village of Francorchamps, ask the procedure to the Roannay Restaurant
- 2.3 Call Heli Service Belgium info freq. 130,40 MHz 5 minutes before reaching the heliport. In 90% of the cases, the “West procedure” will be applicable. Only if wind > 08 kts and coming from the east, the East procedure will be applicable
- 2.4 The required altitude is 500 ft AGL (+/-2000 ft QNH) to join “Heli Service Belgium heliport” and 1000ft AGL (+/- 2500 ft QNH) to leave the area of the heliport .to provide separation with the other helicopters
- 2.5 Overtaken is not allowed.in final approach
Advised procedure speed is 80 Kts until short final speed is applicable.
- 2.6 An embarking and disembarking spot is available at “Francorchamps heliport” for shuttle flights. All passengers are to be disembarked at this spot for the shuttle flights. For all other flights, passengers will be embarking and disembarking at their parking.

3. RESERVATION AND BOOKING

- 3.1 Francorchamps heliport is available for :

- All helicopter A.O.C.operators
- All private flights

The helicopters who transport passengers for remuneration has to be on an A.O.C.

The private flights may land with passengers only one time. If a helicopter is making more than one rotation with passengers, it will be considered as performing public transport and has to be on an A.O.C. with a current professional pilot and provide a copy of his A.O.C.

- 3.2 **A PPR NUMBER IS REQUIRED FOR ALL HELICOPTERS LANDING AT HELI SERVICE BELGIUM HELIPORT.**

To receive a PPR number, advise Heli Service Belgium by fax with following information :

Type of helicopter, number of passengers, number of required landing with passengers, copy of the AOC if applicable, payment of the landing fees (see 2.10 for amount)

Email : ops@hsb.be Fax number : ++ 32 2 360 27 70 For information, tel : ++ 32 2 361 21 21

- 3.3 Each helicopter will receive a PPR number after he has played his landing fee. This number will be used for all radio communication. Helicopters with no PPR number will be advised to proceed to EBSP and will not be allowed to land at “Francorchamps heliport”
- 3.4 No fuel is available at Heli Service Belgium heliport. For refuelling :
At EBSP (Spa La Sauvenière) F3 and JET A1
When taking-off for refuelling (without passengers) en coming back from refuelling (with no passengers), no landing fee will be charged.

4. LANDING FEES

The landing fees are to be calculate as following :

Price per passenger **95 € vat not incl**

Parking fees helicopter **85 € vat not incl**

Shuttle to and fro the circuit included in the price

(1) A landing is taking in account when passengers are disembarking. When the helicopter is taking off for refuelling with no passenger and coming back to land, no landing fee will be counted.

(2) Following helicopters are accepted : R22, HU300, HU330, R44, B206, EC120, AS350, AS355, EC130, A109, EC135, EC145, BO105 Other type are not accepted

5. OPERATING VFR MINIMA

Visibility : 1500 m (may be reduce to 800m for a short period)

Cloud base : 500 ft

Below those minima, the aeronautical operations will be suspended in the FRCH TRA

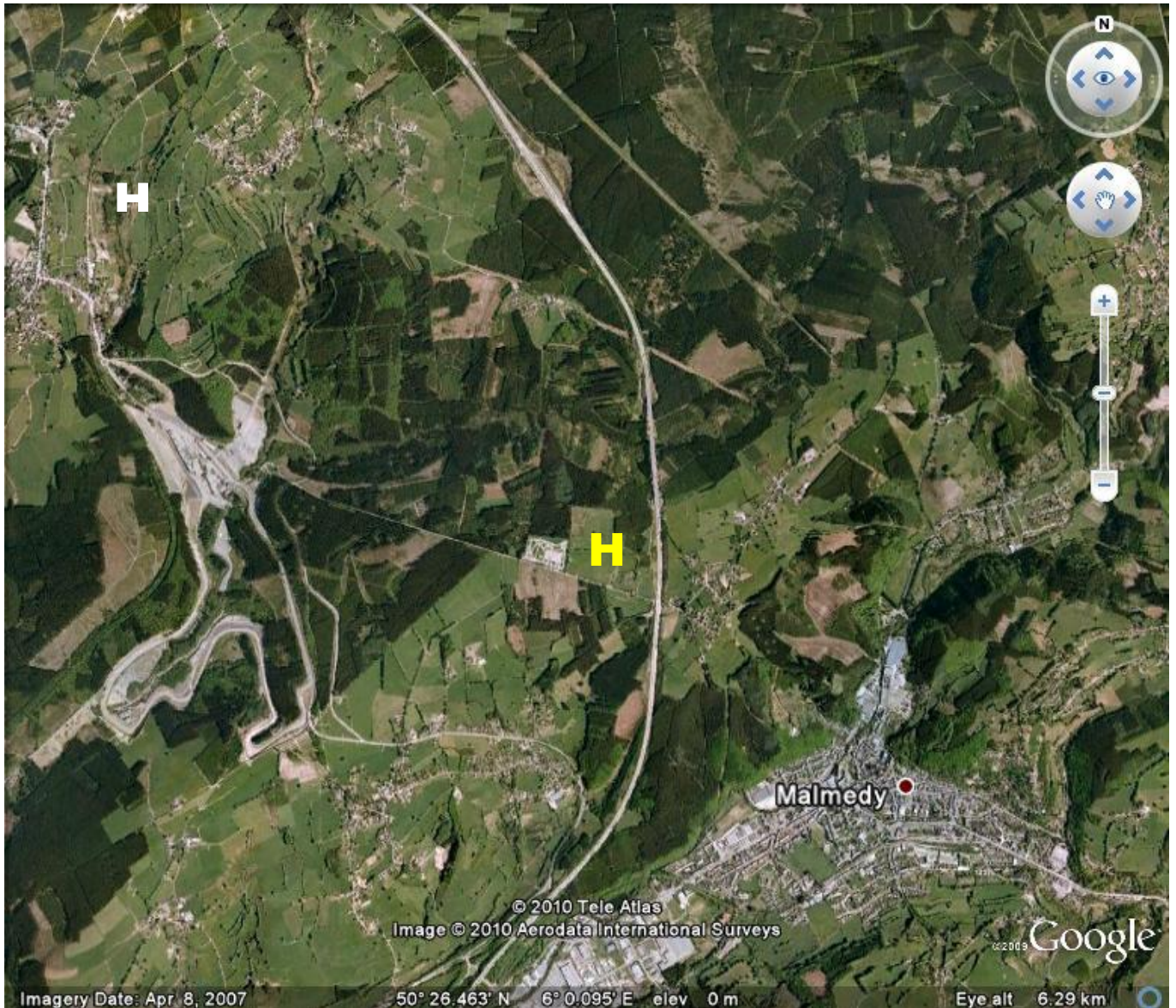
6. OPENING DATE AND HOURS

From Friday 26 & Saturday 27 & Sunday 28 August 2011

From 07:00 AM to 08:00 PM local time

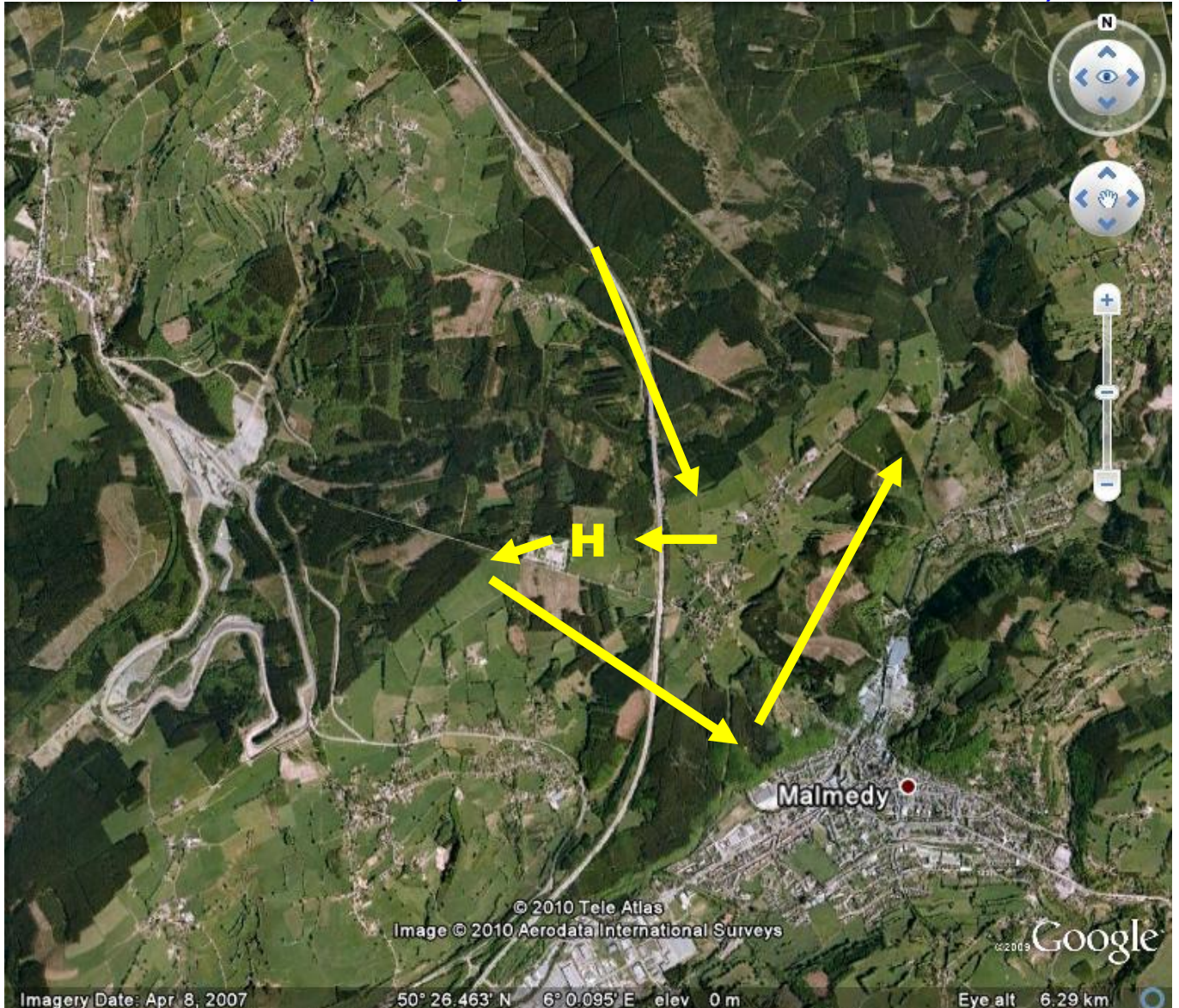
Take-off and landing is authorised between those hours, also during the F1 race

7. GENERAL SITUATION OF HELI SERVICE BELGIUM HELIPORT



- H (white) Roannay Heliport
- H (Yellow) Francorchamps Heliport
- Do not fly into the black oval, with exception for landing and take-off at Heli Service Belgium heliport at 500 ft AGL
- Be advise that helicopters are flying also to the Roannay Heliport situated in the village of Francorchamps. Do not overfly the village of Francorchamps

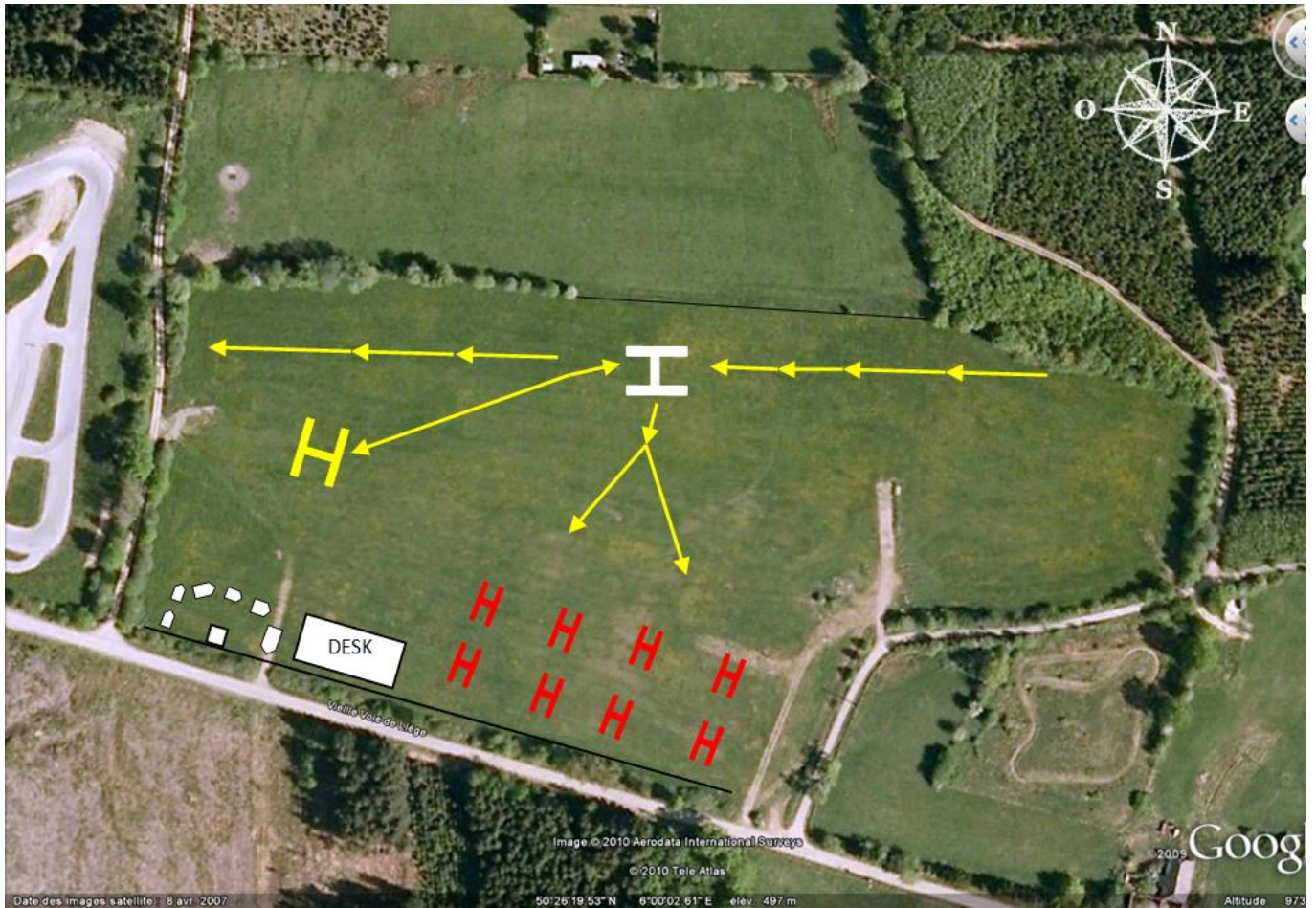
9. WEST PROCEDURE (will be the procedure to be followed in 90% of the cases)



From the North : along the highway, turn to the right to the heliport.

Departing, after take-off, left turn to the highway, do not overfly the circuit and do not entered the TRA

10. WEST PROCEDURE GROUND



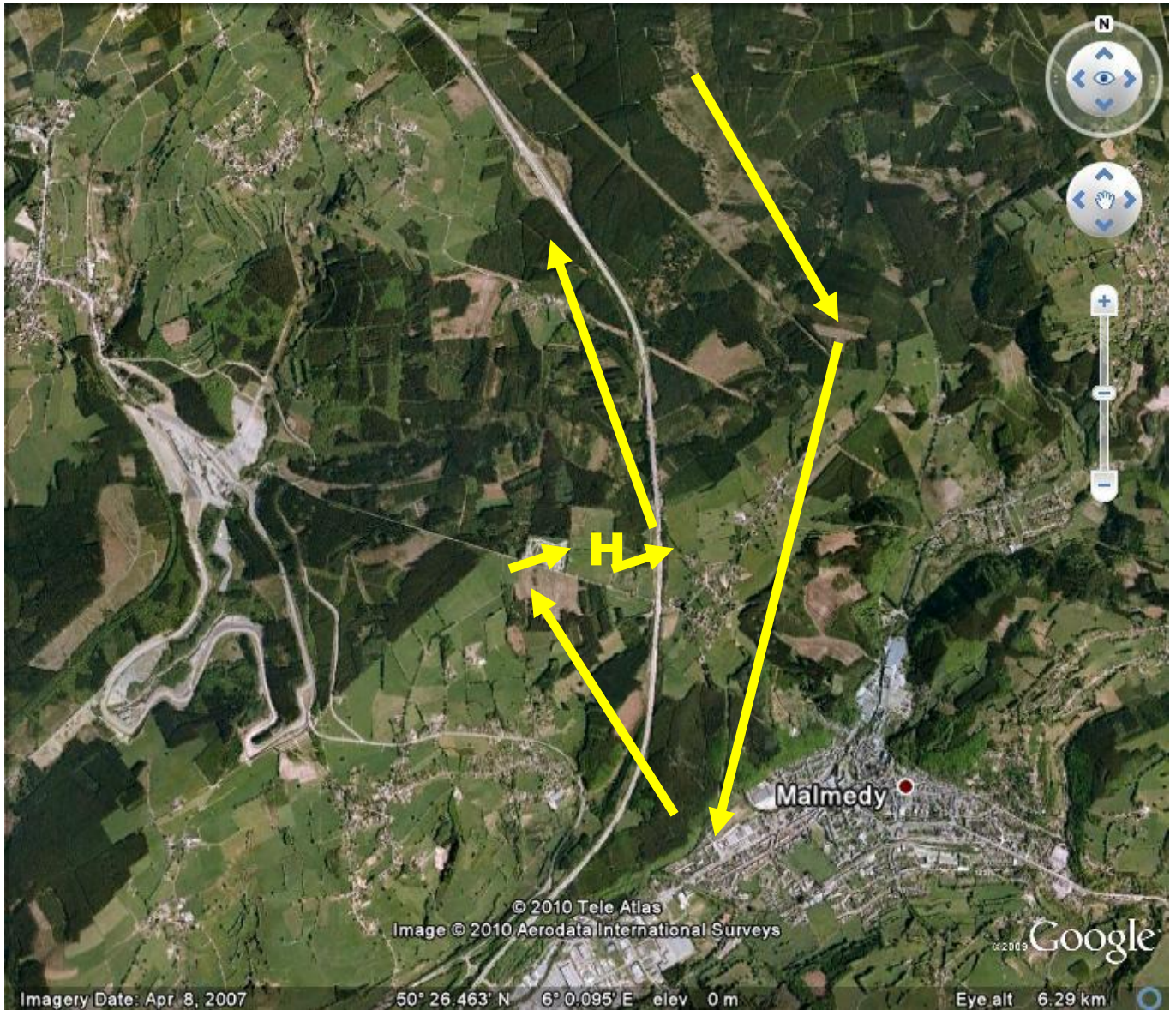
H (white) : FATO (landing area)

H (Yellow): Only for shuttles, embarking and disembarking passengers

H (Red): Helicopter parking

Frequency : 130.4

11. EAST PROCEDURE



12. EAST PROCEDURE GROUND

